

# fortitude hat

by Kelly McClure



## The Technical Stuff

### Skill Level

Rookie-Apprentice-Virtuoso-Genius

### Skills

- knit, purl, stranded knitting, chart reading

### Sizes

- one size - fits an adult head approx 19-22"; hat measures approx 8.5" wide and 8.5" tall lying flat

### Gauge

- approx 11 sts and 13 rows = 10 cm (4") in stranded patt on 9 mm unblocked

### Yardage and Yarn

- approx 80 yds (total) superbulky weight wool

### Suggested Brand

- 2 balls James C. Brett Rustic  
82% acrylic, 10% wool, 8% viscose  
57 m (62 yds) per 100 g
- shown in colours CS20 (light pink, approx 40 yds used) and CS7 (dark pink, approx 40 yds used)

### Needles

- 8 mm (US 11) 40 cm (16") circs
- 9 mm (US 13) 40 cm (16") circs
- 9 mm (US 13) dpns (or long circ for Magic Loop method)

or size needed to obtain gauge

Note: for a larger size, use 9 mm and 10 mm needles

### Other Materials

- tapestry needle or crochet hook
- 4 large stitch markers (plus 1 unique marker for BOR)
- large faux fur pom pom (optional)

Fortitude Hat is a hug for your head and it makes a perfect last-minute gift. It is oversized, but cozy; it is instant gratification. Use it to channel some tenacity during a time when we could all use a little more fortitude.

This hat is made with a superbulky yarn and has one size. It uses a simple yet striking diamond design that looks best in high-contrast colours.

It is constructed from the bottom to the crown on circular needles, switching to dpns or Magic Loop method to close up the top. A faux fur pom pom adds the perfect touch of whimsy!



Bohoknits Patterns

2020 © Kelly McClure kelly@bohoknits.com

This pattern is for personal use only. Patterns or items made from this pattern cannot be sold for profit.

## Instructions

With MC and long-tail method (you will need approx 2 yds / 72" for the CO), CO 50 sts with smaller needles. Join in the rnd being careful not to twist sts. Pm for BOR.

**Rows 1-4:** \*K1tbl, P1\*, rep from \* to \* to end of rnd.

Change to larger circs and knit 1 row placing markers every 10 sts to mark chart reps if desired.

*Note:* For help with stranded knitting see Resources on page 3. You may want to “catch” your floats every 4 sts or so.

Attach CC and begin chart working Rows 1-15 once cutting MC after Row 15 (decs are worked in CC).

Knit 2 rnds. Hat should measure approx 6-7" from cast on. If you would like a taller hat, work extra “plain” rows here.

### Decs:

*Note:* Change to dpns or Magic Loop method when sts become too tight on circs. 5 sts are decreased every row.

**Row 1:** \*K8, K2tog\*, rep from \* to \* to end of rnd. 45 sts.

**Row 2:** \*K7, K2tog\*, rep from \* to \* to end of rnd. 40 sts.

**Row 3:** \*K6, K2tog\*, rep from \* to \* to end of rnd. 35 sts.

**Row 4:** \*K5, K2tog\*, rep from \* to \* to end of rnd. 30 sts.

**Row 5:** \*K4, K2tog\*, rep from \* to \* to end of rnd. 25 sts.

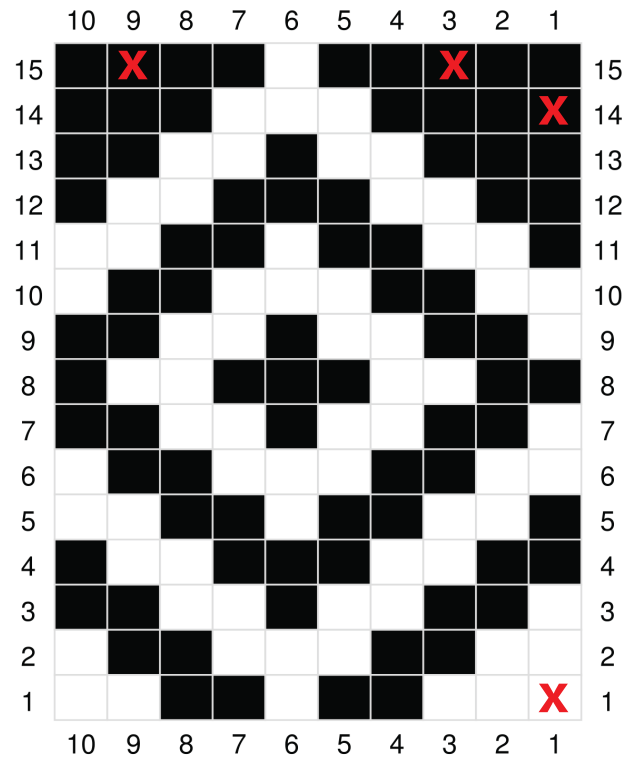
**Row 6:** \*K3, K2tog\*, rep from \* to \* to end of rnd. 20 sts.

**Row 7:** \*K2, K2tog\*, rep from \* to \* to end of rnd. 15 sts.

**Row 8:** \*K1, K2tog\*, rep from \* to \* to end of rnd. 10 sts.

**Row 9:** K2tog to end of rnd. 5 sts. Tie off.

Weave in ends and attach pom pom. Blocking is optional.



 = Main Colour (light pink)

 = Contrast Colour (dark pink)

 = float “catch” suggestion

<b>beg</b> = beginning	<b>psso</b> = passover
<b>BO</b> = bind off	<b>pu</b> = pick up
<b>BOR</b> = beginning of round	<b>pwis</b> = purlwise
<b>CC</b> = contrasting colour	<b>rem</b> = remaining
<b>circ(s)</b> = circular needle(s)	<b>rep</b> = repeat
<b>cn</b> = cable needle	<b>rev St st</b> = reverse stockinette stitch
<b>CO</b> = cast on	<b>rnd(s)</b> = round(s)
<b>dpn(s)</b> = double pointed needle(s)	<b>RS</b> = right side
<b>dec(s)</b> = decrease(s)	<b>skp</b> = slip one stitch, knit one stitch, pass slipped stitch over knitted stitch (decrease)
<b>inc</b> = increase	<b>sl</b> = slip
<b>K</b> = knit	<b>sl m</b> = slip marker
<b>K2tog</b> = knit two stitches together (decrease)	<b>ssk</b> = slip, slip, knit two slipped stitches together (decrease)
<b>Kfb</b> = knit into front and back of stitch (increase)	<b>sssk</b> = slip, slip, slip, knit all slipped stitches together (double decrease)
<b>Ktbl</b> = knit through back loop	<b>st(s)</b> = stitche(s)
<b>kwise</b> = knitwise	<b>St st</b> = stockinette stitch / stocking stitch
<b>m</b> = marker	<b>tbl</b> = through back loops
<b>M1</b> = make one (increase)	<b>tog</b> = together
<b>M1L</b> = left slanting increase	<b>WS</b> = wrong side
<b>M1R</b> = right slanting increase	<b>wyib</b> = with yarn in back
<b>MC</b> = main colour	<b>wyif</b> = with yarn in front
<b>P</b> = purl	<b>YO</b> = yarn over
<b>P2tog</b> = purl two stitches together (decrease)	
<b>patt</b> = pattern	
<b>pm</b> = place marker	

## Resources

### Long-Tail Cast On

<https://www.purlsoho.com/create/long-tail-cast-on/>

### Two-handed Stranding

<https://www.andrearangel.com/tutorial-blog/2019/4/23/knitting-colorwork-with-two-hands>

### Dominant Colours in Stranded Knitting

<https://ysolda.com/blogs/journal/colour-dominance>

### Catching Floats

[https://annkingstone.com/knitting\\_school/stranded/trapping-floats/](https://annkingstone.com/knitting_school/stranded/trapping-floats/)

