

mooncat shawl

by Kelly McClure



The Technical Stuff

Skill Level

Rookie-Apprentice-Virtuoso-Genius

Skills knit, purl, yarn overs, tab cast-on, chart reading (optional)

Sizes one size

Gauge

not crucial - approx 23 sts and 36 rows = 10 cm (4")
on 4 mm (US 6) needles in St st lying flat after blocking

Yarn fingering weight wool

Suggested Brand

3 skeins Lizzie-Anne Yarns *Dreamy Singles*
100% superwash merino wool
366 m (400 yds) per 100 g

shown in colours:

Glee (green and purple speckles) - 45 g (180 yds)

Magnolia (pink with speckles) - 70 g (280 yds)

Vintage Berry (purple) - 80 g (320 yds)

Needles

4 mm (US 6) 40 cm (32") circls or longer

5 mm (US 8) of any kind (for BO)

or size needed to obtain gauge

Other Materials

- tapestry needle or teeny crochet hook
- 1 locking stitch marker
- 2-4 ring stitch markers (2 are used to mark the chart sts; 2 are optional - used to mark your 3 garter edge sts)
- blocking pins

This shawl is third in a collaboration series with Ontario indie dyers. This design features **Lizzie-Anne Yarns**, a mother-daughter team who creates feminine, saturated hand-dyed yarns in rural Ontario.

This design combines simple elements for a very visually striking shawl that can be dressed up or down. It's easy enough for beginners and makes good "TV knitting" for more advanced knitters.

Mooncat shawl is knit from the inner-neck outwards on circular needles with three colours. It uses garter and eyelet stitches and finishes with a simple lace pattern for the trim.



Instructions

Note: This shawl starts at the inner neck and has a 3-st garter stitch edge at the beginning and end of each row. Three increases are made every row (RS and WS) to create the crescent shape.

Extra-Long Tab Cast On

See *Resources* on page 6 for help with the tab cast on. Work back and forth.

With colour A, CO 3 sts with backwards loop method. Knit 28 rows (garter stitch - 14 purl ridges).

Next: K3, turn 90 degrees clockwise, *YO, pu and knit 1 st in the next “ditch” between the purl ridges*, rep from * to * 12 times more. YO, turn 90 degrees clockwise, pu and knit 3 sts from the CO edge. Turn. 33 sts.

Garter

Note: Markers are placed after the first 3 stitches and before the last 3 stitches to mark the edges, however, this is optional. Slip all markers throughout.

Row 1: K3, pm, YO, Kfb, knit to last 3 sts, YO, pm, K3. 3 sts increased.

Rep this row 15 times more. 8 purl ridges with the CO tail at the right. 45 sts increased. 81 sts.

Eyelets

Note: You may want to place a locking marker onto the front of the fabric after working a few rows so you can easily distinguish the RS.

Row 1 (RS): K3, YO, Kfb, knit to last 3 sts, YO, K3.

Row 2 (WS): K3, YO, Kfb, purl to last 3 sts, YO, K3.

Row 3: K3, YO, Kfb, *YO, K2tog*, rep from * to * to last 3 sts, YO, K3.

Row 4: Rep Row 2. 12 sts increased. 93 sts.

Garter and Eyelets

Next: Rep Garter Row 1 eight times. 4 purl ridges on RS. 24 sts increased. 117 sts.

Next: Rep Rows 1-4 of Eyelets. 12 sts increased. 129 sts.

Next: Rep Garter Row 1 eight times. 4 purl ridges on RS. 24 sts increased. 153 sts.

Next: Rep Rows 1-4 of Eyelets. 12 sts increased. 165 sts.

Next: Rep Garter Row 1 eight times. 4 purl ridges on RS. 24 sts increased. 189 sts.

You should have four garter sections and three rows of eyelets. Approx 25 g of colour A has been used up to this point.



Stripes

Notes: You will change colours every two rows. Your garter edges will appear striped.

You don't need to twist your strands when changing colours. Always pick up the "old" colour from the front and pick up the "new" colour from the back.

Row 1 (RS): With colour A, K3, YO, Kfb, knit to last 3 sts, YO, K3.

Row 2 (WS): K3, YO, Kfb, purl to last 3 sts, YO, K3.

Attach colour B. Do not cut colour A.

Rep Rows 1-2 with colour B. Rep Rows 1-2 with colour A. Rep from ** to ** three times more. 5 stripes of colour A and 4 stripes of colour B. 54 sts increased. 243 sts.

Cut colour A. Approx 35 g of colour A and 6 g of colour B has been used up to this point (total).

Garter and Eyelets

Next: With colour B, rep Garter Row 1 eight times. 4 purl ridges on RS. 24 sts increased. 267 sts.

Next: Rep Rows 1-4 of Eyelets. 12 sts increased. 279 sts.

Next: Rep Garter Row 1 eight times. 4 purl ridges on RS. 24 sts increased. 303 sts.

Next: Rep Rows 1-4 of Eyelets. 12 sts increased. 315 sts.

Next: Rep Garter Row 1 eight times. 4 purl ridges on RS. 24 sts increased. 339 sts.

Attach colour C. Do not cut colour B. Approx 50 g of colour B has been used up to this point (total).

Stripes

Rep the Stripes section (left), using colour B (instead of colour A) and C (instead of colour B). 54 sts increased. 393 sts.

Cut colour B. Approx 70 g of colour B and 15 g of colour C has been used up to this point (total).

Garter and Eyelets

Next: With colour C, rep Garter Row 1 eight times. 4 purl ridges on RS. 24 sts increased. 417 sts.

Next: Rep Rows 1-4 of Eyelets. 12 sts increased. 429 sts.

Next: Rep Garter Row 1 eight times. 4 purl ridges on RS. 24 sts increased. 453 sts.

Diamonds

Notes: You will place markers before and after the chart reps. The increase sts made between the edge sts and the chart markers will be worked in St st (see first photo on page 6).

Take the time to check and double-check your sequences, especially on Row 1 (page 5, first column) since this "sets" the lace pattern.

Next (RS): With colour C, K3, YO, Kfb, knit to last 3 sts, YO, K3.

Next (WS): K3, YO, Kfb, purl to last 3 sts, YO, K3. 6 sts increased. 459 sts.



See chart on page 6 for more help.

Row 1 (RS): K3, YO, Kfb, K2, pm, *K1, YO, K6, sl 1, K2tog, pssso, K6, YO*, rep from * to * to last 5 sts, pm, K2, YO, K3.

Row 2 (and all WS rows): K3, YO, Kfb, purl to last 3 sts, YO, K3.

Row 3: K3, YO, Kfb, knit to m, *K2, YO, K5, sl 1, K2tog, pssso, K5, YO, K1*, rep from * to * to m, knit to last 3 sts, YO, K3.

Row 5: K3, YO, Kfb, knit to m, *K3, YO, K4, sl 1, K2tog, pssso, K4, YO, K2*, rep from * to * to m, knit to last 3 sts, YO, K3.

Row 7: K3, YO, Kfb, knit to m, *K4, YO, K3, sl 1, K2tog, pssso, K3, YO, K3*, rep from * to * to m, knit to last 3 sts, YO, K3.

Row 9: K3, YO, Kfb, knit to m, *K5, YO, K2, sl 1, K2tog, pssso, K2, YO, K4*, rep from * to * to m, knit to last 3 sts, YO, K3.

Row 11: K3, YO, Kfb, knit to m, *K6, YO, K1, sl 1, K2tog, pssso, K1, YO, K5*, rep from * to * to m, knit to last 3 sts, YO, K3.

Row 13: K3, YO, Kfb, knit to m, *K7, YO, sl 1, K2tog, pssso, YO, K6*, rep from * to * to m, knit to last 3 sts, YO, K3.

End with a WS/Row 14. 42 sts increased. 501 sts.

Cut colour C. Attach colour A.

Next (RS): K3, YO, Kfb, knit to last 3 sts, YO, K3.

Next (WS): Remove all markers on this row. K3, YO, Kfb, knit to last 3 sts, YO, K3. 6 sts increased. 507 sts.

Picot Bind Off

Notes: Making the picots will help you when you are pinning your points during blocking.

Your picots should line up with the middle st of your “diamonds” (st 1 of chart). Lining them up properly is more important than your st counts (see first photo on page 6).

The “diamonds” will appear as triangles before blocking out the points.

Next: With 5 mm needle BO with picots as follows.

BO 31 sts (kwise). Check that you have just bound off st 1 of chart - if not, BO until you have.

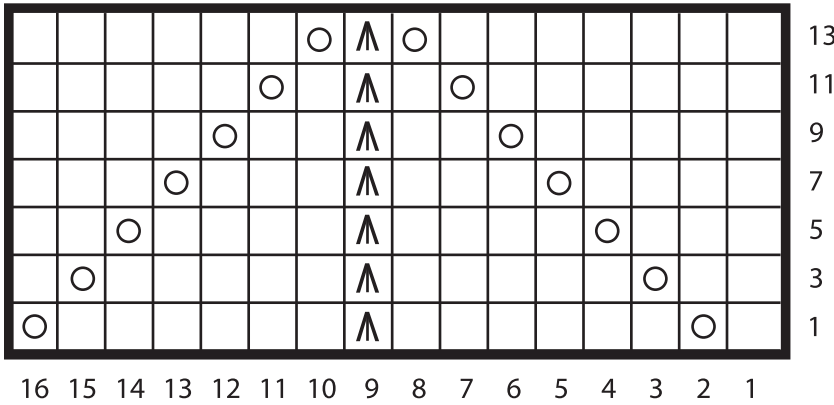
Pass st to left needle pwise. (Knit into the same st, pass it back to left needle pwise) twice, knit into the same st (3 sts increased). BO 16 sts (kwise).

Rep from * to * to last 28 sts. Work one more picot. BO the rest of the sts kwise. Tie off.

Finishing

Wet block as follows. Soak in warm water for at least an hour. You can mix in a wool wash like Eucalan or some hair conditioner before putting your shawl in the water. Gently squeeze out the water without agitating the fibre too much (don't wring!). Lay it out flat on your blocking mats, spreading -it into a balanced, curved shape. Pin all the points in place (placing pins into the picots). Wait until it's completely dry before taking the pins out. Weave in all ends. Enjoy!





Note: WS/even rows are purled.

□ = knit

○ = YO (yarn over, one stitch increased)

∧ = sl 1 kwise, K2tog, pss0 (two stitches decreased)



Resources

Tab Cast On
<https://kelbournwoolens.com/tips-and-tricks/garter-tab-cast-on>



beg = beginning

BO = bind off

BOR = beginning of round

CC = contrasting colour

circ(s) = circular needle(s)

cn = cable needle

CO = cast on

dpn(s) = double pointed needle(s)

dec(s) = decrease(s)

inc = increase

K = knit

K2tog = knit two stitches together (decrease)

Kfb = knit into front and back of stitch (increase)

Ktbl = knit through back loop

kwise = knitwise

m = marker

M1 = make one (increase)

M1L = left slanting increase

M1R = right slanting increase

MC = main colour

P = purl

P2tog = purl two stitches together (decrease)

patt = pattern

pm = place marker

psso = passover

pu = pick up

pwise = purlwise

rem = remaining

rep = repeat

rev St st = reverse stockinette stitch

rnd(s) = round(s)

RS = right side

skp = slip one stitch, knit one stitch, pass slipped stitch over knitted stitch (decrease)

sl = slip

sl m = slip marker

ssk = slip, slip, knit two slipped stitches together (decrease)

sssk = slip, slip, slip, knit all slipped stitches together (double decrease)

st(s) = sticche(s)

St st = stockinette stitch / stocking stitch

tbl = through back loops

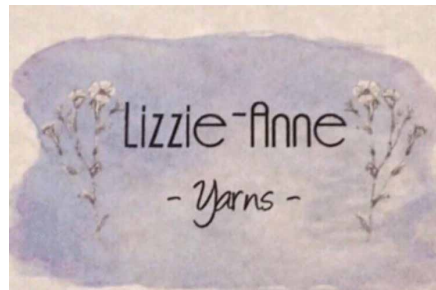
tog = together

WS = wrong side

wyib = with yarn in back

wyif = with yarn in front

YO = yarn over



About the Dyers Lizzie-Anne Yarns is a mother-daughter indie-dyer team, devoted to providing high-quality and beautifully dyed yarn made with love in our home in rural Ontario, Canada. We started dyeing in May of 2017, and our small business has quickly grown to be a labour of love that we hope to share with the crafting and fibre community. We dye in small batches, and each skein is unique. We hope our yarn will bring joy and creativity to knitters worldwide. Our yarn is ethically sourced and mulesing free.

Instagram @lizzieanne yarns

www.lizzieanne yarns.com

#mooncatshawl

Hope you enjoyed the pattern.
Thanks from Bohoknits!

