

STOCKING PURSE ORNAMENT

By Terry Liann Morris – SailingKnitter

Fill with candy, gift card, or special gifts like jewelry for the very lucky! This ornament is worked flat for the corrugated ribbing, then joined into the round for the remainder of the stocking.

Finished Measurements

Approx. 3" wide x 7" long

Materials

Fingering weight yarn in 5 colors of your choice. Sample knit in Knit Picks Palette, Pimento red, Blue Tones, Turmeric gold, Clover green, and white.

Set US Size 1 (2.25mm) double pointed needles

3" clasping purse frame (or recycle a change purse)

12" ribbon or cording for hanger

Small number of assorted beads for decorating trees

Ribbon for hanging

Craft clue

Flathead screwdriver



Gauge

32 sts & 32 rows = 4" (10cm) over stranded colorwork

Note

Clasping frames for this ornament can be found inexpensively at dollar stores as a change purse. Carefully remove fabric from frame.

CUFF

The cuff is worked back and forth in two pieces then later is joined to

knit in the round. Measure the depth of the side arms of your clasp purse frame. This will determine how long you will work the two cuff pieces before joining. Keep all floats (strands from unused color) to the wrong side.

Make 2

Working with 2 double point needs and Red yarn, Cast on 30 sts. Join in Gold yarn.

Row 1 set up for corrugated ribbing (WS): *p2 red, p2 gold, repeat from * to end.

Row 2 (RS): k2 red, pick up gold yarn from underneath the red to twist yarns and prevent a hole, p2 gold, k2 red, *p2 gold, k2 red, repeat from * to end of row.

Row 3 (WS): p2 red, pick up gold yarn from underneath the red to twist yarns and prevent a hole, k2 gold, p2 red, *k2 gold, p2 red, repeat from * to end of row.

Repeat Rows 2 & 3 three more times for a total of 9 rows after casting on.

ABBREVIATIONS

k	Knit
k2tog	Knit 2 together
p	Purl
rnd	Round
RS	Right Side
ssk	Slip 1 knitwise, slip 1 knitwise, knit these 2 together
WS	Wrong Side

Next two rows: knit. This creates a decorative purl ridge.

Begin working from Stocking Purse Ornament chart in stranded color work technique, knitting on RS rows and purling on WS rows until length of piece is the same as the measurement of the side arms of your clasp purse frame *not including the cast on edge* ending after working a WS row. You will have to break yarns and reattach to maintain pattern.

Leave sts on one double point needle. Make second piece on 2 double point needles.

Joining to knit in the round

Begin working the next row of the chart on the second cuff piece. Continue across first cuff piece all onto one needle to end of row. Evenly distribute sts between 3 double point needles. Do not turn work. Join to work in the round taking care not to twist the sts with RS facing out.

HEEL SET UP

Slip the last 12 sts worked onto the free needle. Re knit these sts with waste yarn. Slip these sts back onto the right hand needle. Continuing in same direction with the waste yarn, knit the next 12 sts. Slip the last 12 sts knit with waste yarn back onto left hand needle. You are now at the center back of the stocking.

FOOT

Join in Blue yarn at the center back and continue with Stocking Purse Ornament Foot chart.

TOE

Break off White and Blue yarns. Rearrange stitches so that you have 30 sts on the first needle, 15 sts on the second needle and 15 sts on the last needle. Your rounds will begin and end at the side of the foot.

Rnd 1: Join in Green yarn, knit around

Rnd 2 (decreases): With green yarn, k1, ssk, knit to the last 3 sts, k2tog, k1, on second needle k1, ssk, knit to end of needle, on last needle knit to the last 3 sts, k2tog, k1. You will have 56 sts.

Rnd 3: with White yarn knit around

Rnd 4 (decreases): same as rnd 2 except use White yarn. You will have 52 sts

Rnd 5: With Green knit around

Rnd 6 (decreases): same as Rnd 2 with Green. You will have 48 sts

Rnd 7 & 8 (decreases): same as Rnd 2 with White. Break White yarn. You will have 40 sts

Rnd 9 & 10 (decreases): same as Rnd 2 with Green. Break Green yarn. You will have 32 sts

Rnd 11 (decreases): Join in Red yarn, same as Rnd 2. You will have 28 sts

Slip all the sts from the second and last needles onto one needle. Graft/weave/Kitchener stitch the toe closed.

HEEL

Carefully remove the waste yarn, placing live stitches from each side on needles. You should have 24 sts on one needle and 23 sts on the other. Pick up one st so that both needles have 24 sts. Divide the sts on one of the needles to 12 sts on each of two needles. You will now have 24 sts on the first needle, 12 on the second needle and 12 on the last needle.

Rnd 1: Join in Green yarn, make 1 st by picking up a strand in the gap before the first needle and knit it, k24, make 1 st by picking up and knitting into a strand in the gap before needle 2. You will now

have 26 sts on the first needle. Make 1 st by picking up and knitting into a strand in the gap before the second needle, k12. You will now have 13 sts on the second needle. On the last needle, k12, make 1 st by picking up and knitting into a strand in the gap at the end of the needle. You will now have 13 sts on the last needle.

Rnd 2 (decreases): k1, ssk, knit to last 3 sts, k2tog, k1, next needle; k1 ssk, knit to end, last needle; knit to last 3 sts, k2tog, k1. You will have 48 sts

Rnd 3: Join in White yarn, knit all around

Rnd 4 (decreases): same as Rnd 2 with White yarn. You will have 44 sts

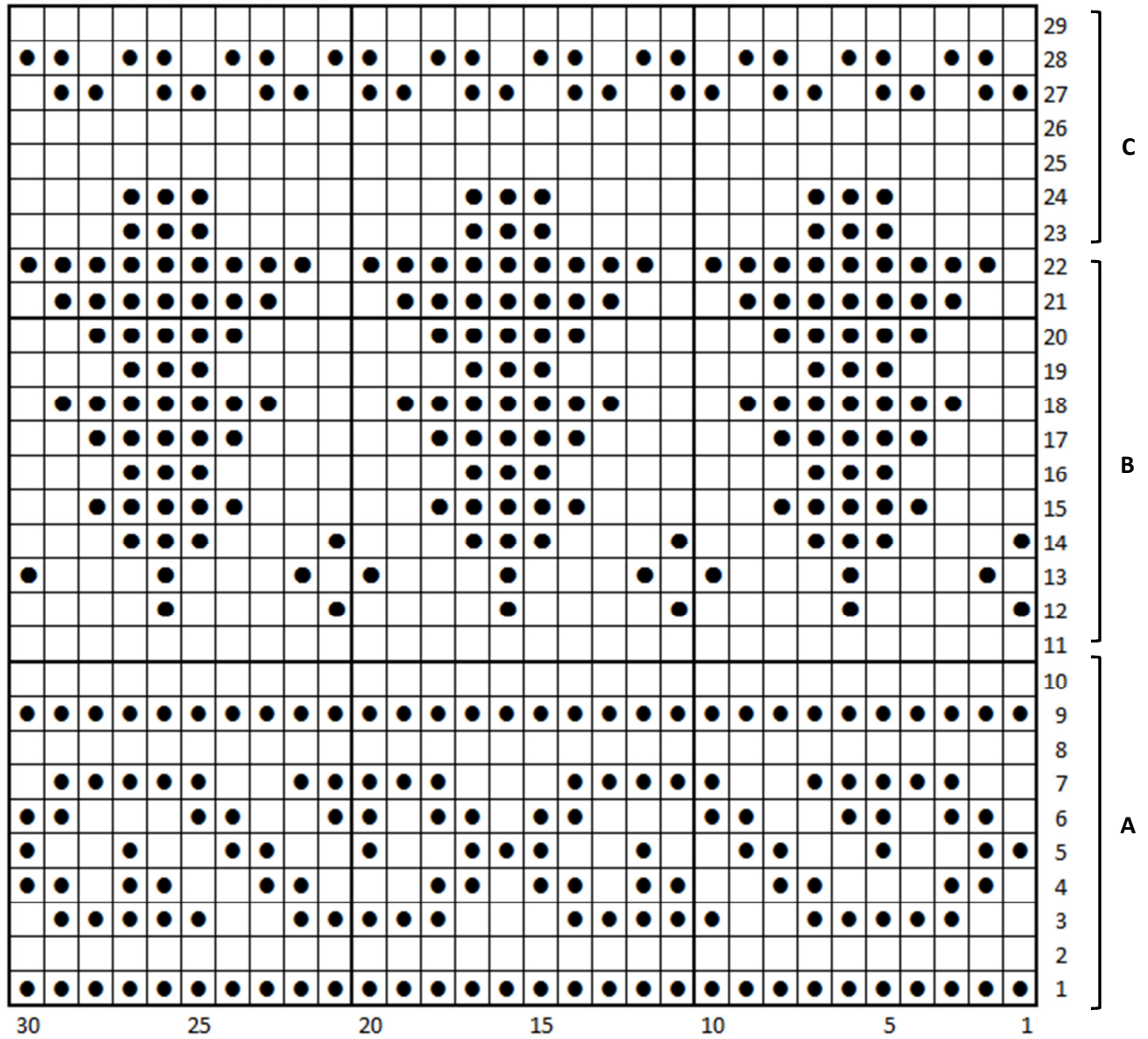
Rnds 5 & 6 (decreases): same as Rnd 2 with Green yarn. You will have 36 sts

Rnds 7 & 8 (decreases): Join in Gold yarn and work same as Rnd 2. You will have 28 sts

Slip all the sts from the second and last needles onto one needle. Graft/weave/Kitchener stitch the toe closed.

Block ornament. Sew assorted beads on the Christmas Trees to decorate. Attach Clasp purse frame. The frame I used was simply clamped over the original fabric. If you have this type, use a flathead screwdriver to slightly open frame and remove fabric. Apply a tiny amount of craft glue inside of frame, and carefully push stocking edges into frame. Let dry. Glue or sew a ribbon onto one end for hanging.

STOCKING PURSE ORNAMENT



LEGEND A Lines 1 thru 10

- Blue
- Gold

LEGEND B Lines 11 thru 22

- Gold
- Green

LEGEND C Lines 10 thru 29

