

# Starlight Over Shetland

By Denise E. M. Bartels

Yarn - Lace weight. I used handspun.

Yardage - Approximately 870 yards.

Needles - I used US 1.5 (2.5 mm) but I knit very loosely.

Depth at Center - 34 inches.

Length - 68 inches.



This shawl gets its name from the Starlight Lace stitch (from Barbara Walkers' *A Second Treasury of Knitting Patterns*) and the traditional Shetland lace patterns I used, including the Trellis Diamond and Small Trees patterns. It is triangular and is knit from the top down with increases on every right-side row, worked at the edges and each side of the center stitch. The two halves are mirror images of each other, since Starlight Lace is not symmetrical.

Start with a tab cast-on. I like a seed stitch edging instead of a garter stitch one because the gauge is closer to the stockinette gauge and I like the texture. So cast on 5 stitches and do 6 rows of k1, p1, k1, p1, k1. On the seventh row, k1, p1, k1, p1, k1, turn work 90 degrees and pick up 3 stitches along the side of the little tab you just made, turn another 90 degrees and pick up 5 stitches along the cast-on edge. You can also start with a provisional cast-on to give you the final 5 stitches.

All even (wrong-side) rows are worked k1, p1, k1, p1, k1, purl until the last 5 stitches, k1, p1, k1, p1, k1.

Rows 1 – 82: K1, p1, k1, p1, k1, Right Chart 1, k1, Left Chart 1, k1, p1, k1, p1, k1.

Rows 83 – 130: K1, p1, k1, p1, k1, Right Chart 2, k1, Left Chart 2, k1, p1, k1, p1, k1.

Rows 131 – 154: K1, p1, k1, p1, k1, Chart 3, k1, Chart 3, k1, p1, k1, p1, k1.

Rows 155 – 196: K1, p1, k1, p1, k1, Chart 4, k1, Chart 4, k1, p1, k1, p1, k1.

Rows 197 – 237: K1, p1, k1, p1, k1, Chart 5, k1, Chart 5, k1, p1, k1, p1, k1.

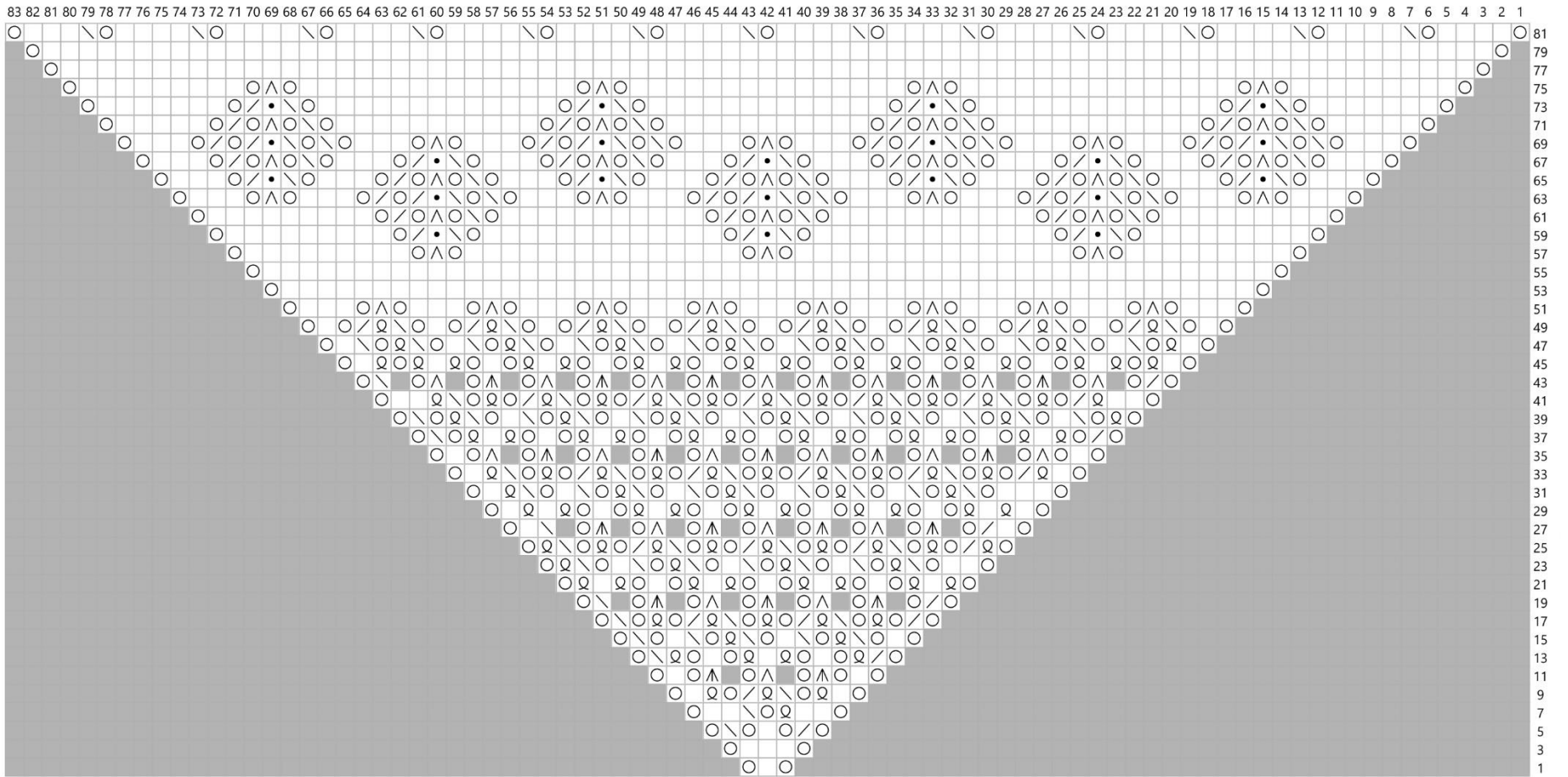
Bind off loosely and block.

The shawl can be made larger by repeating rows 209 through 231 in chart 5 as many times as you want or have yarn for before knitting rows 233 thru 237. Note that the number of times the repeat section is repeated will increase.

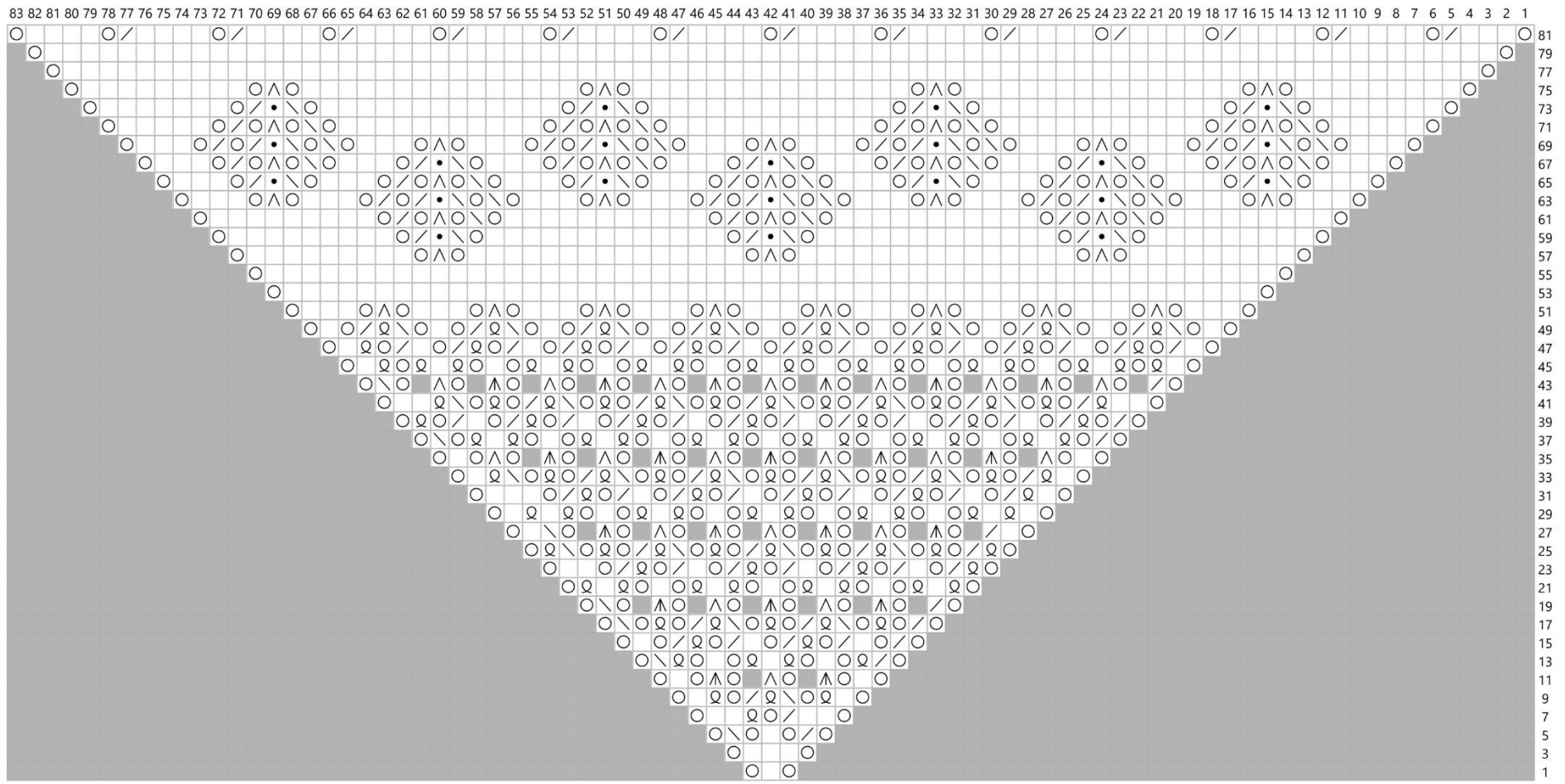




right chart 1



left chart 1





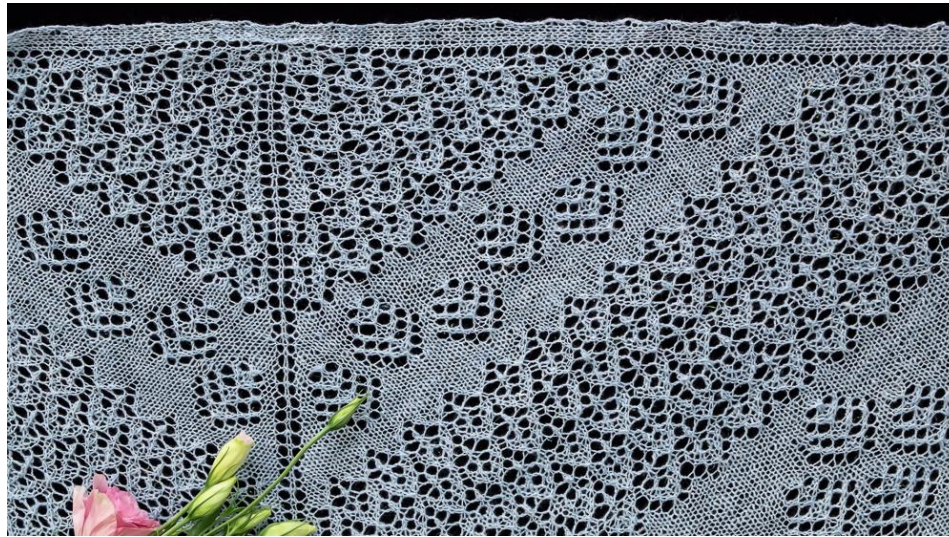


chart 2 right

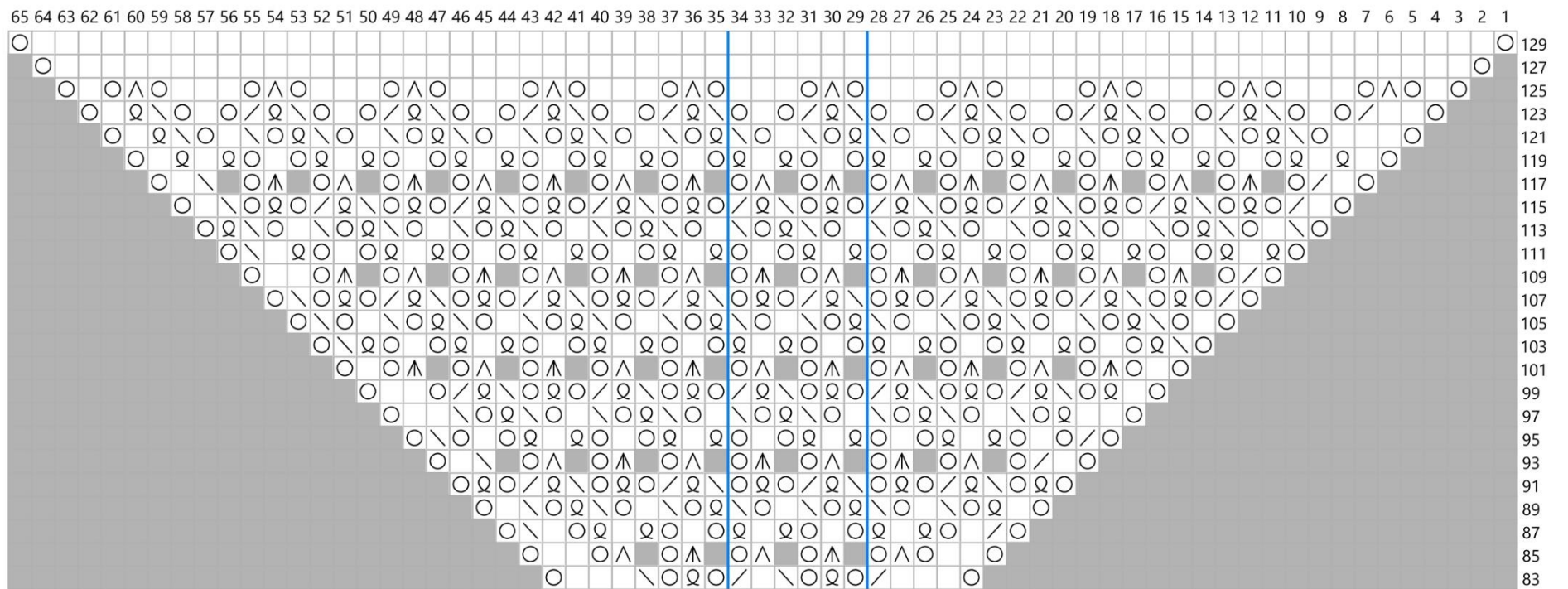


chart 2 left

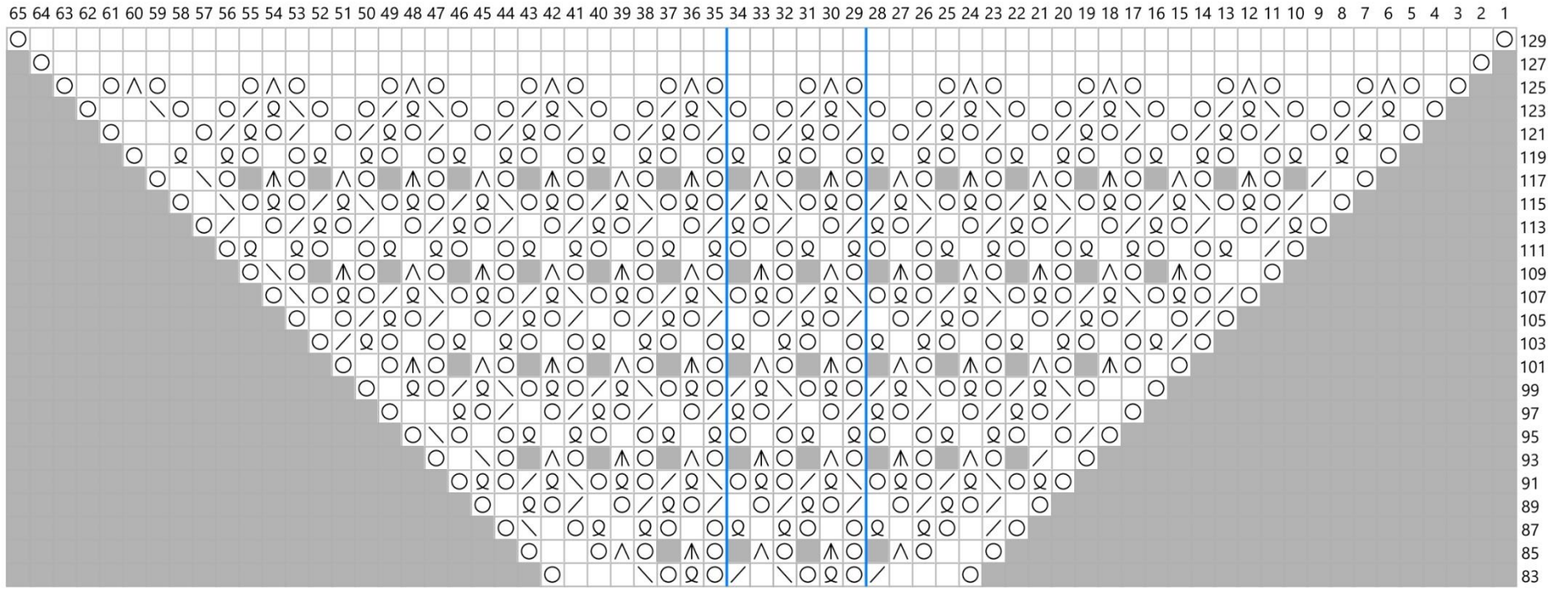




chart 3

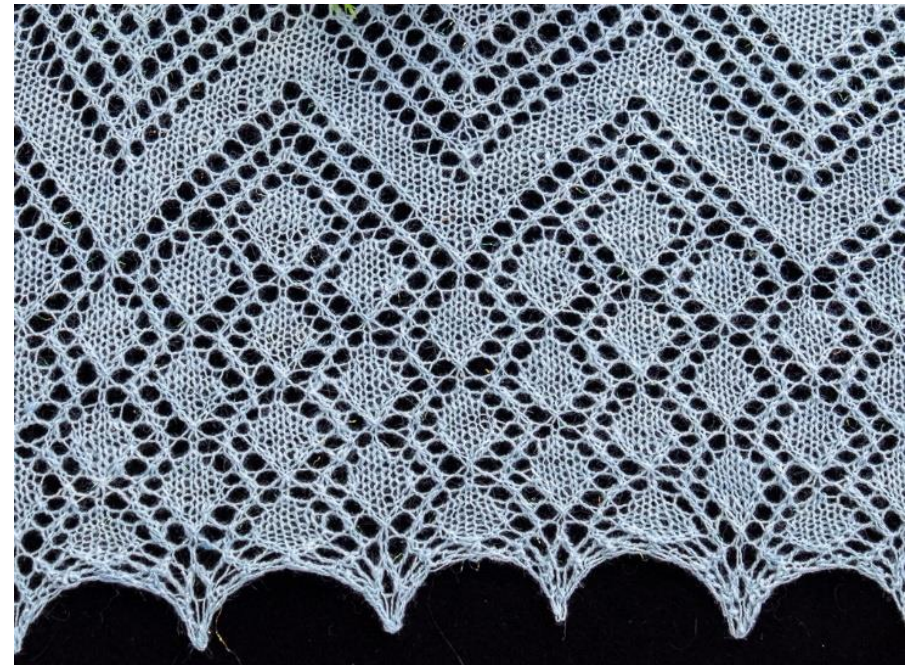
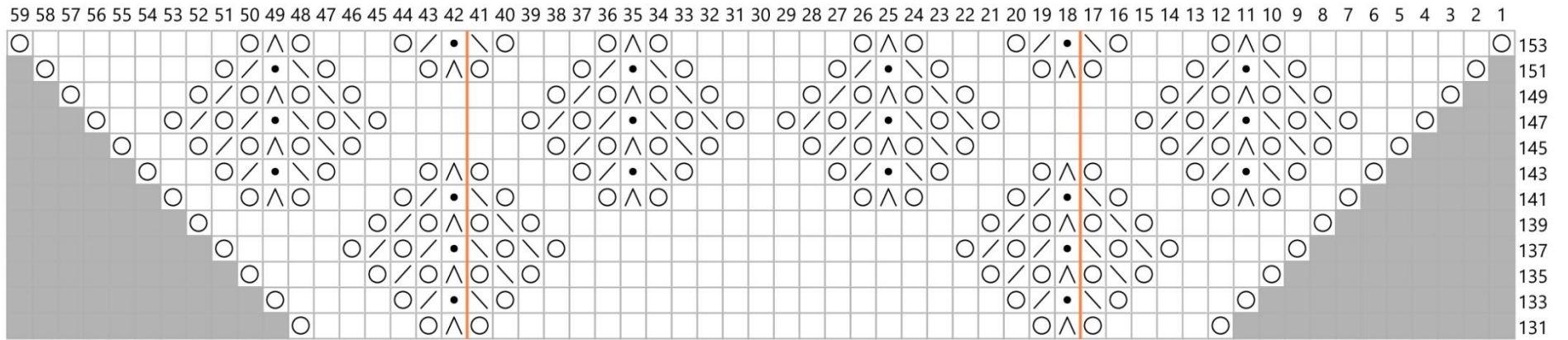




chart 4

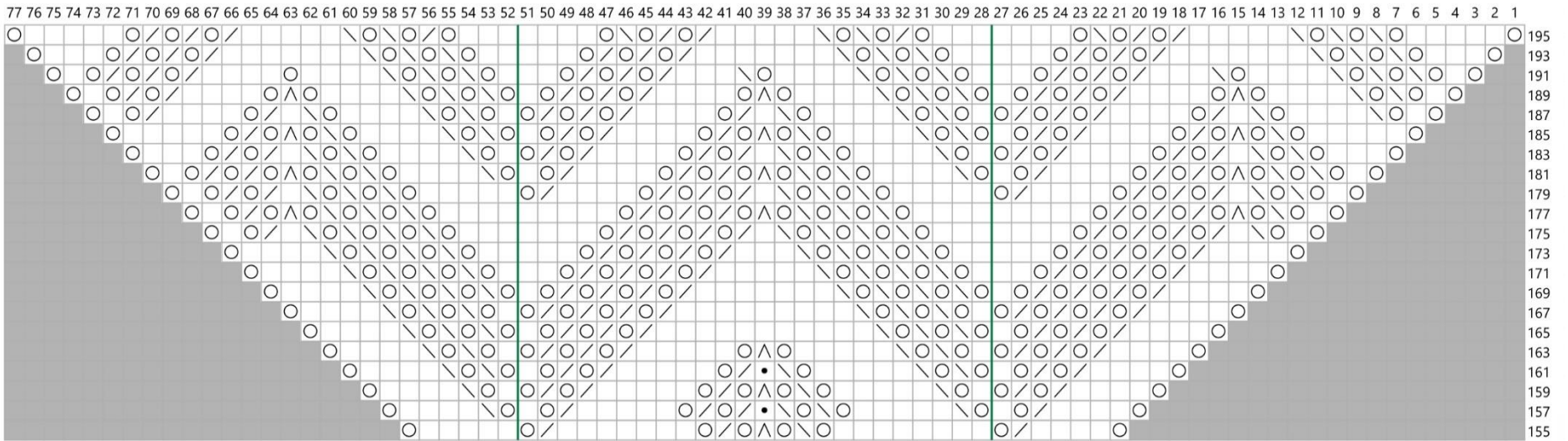
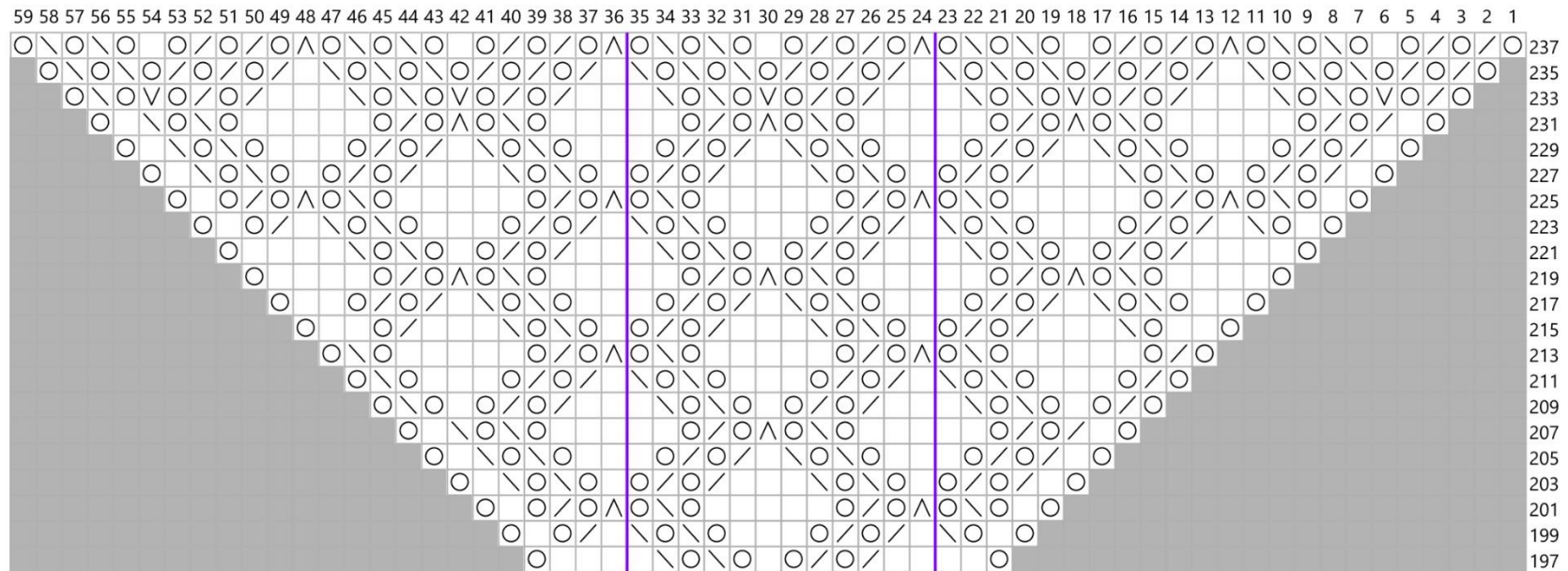


chart 5





Key	
<input type="checkbox"/> RS: knit WS: purl	<input type="checkbox"/> RS: purl WS: knit
<input type="checkbox"/> grey no stitch	<input type="checkbox"/> RS: k tbl WS: p tbl
<input type="checkbox"/> yo	<input type="checkbox"/> RS: knit into fb WS: purl into fb
<input type="checkbox"/> RS: ssk WS: ssp	<input type="checkbox"/> RS: k2tog WS: p2tog
<input type="checkbox"/> RS: sl2, k1, p2sso WS: sl2, p1, p2sso	<input type="checkbox"/> RS: sl1, k2tog, pss0 WS: sl1 wyif, p2tog tbl, pss0
<input type="checkbox"/> repeat 16 times	<input type="checkbox"/> repeat 12 times
<input type="checkbox"/> repeat 5 times	<input type="checkbox"/> repeat 6 times

Note that while the knit in front and back (kfb) stitch adds an extra stitch, it is removed in the next pattern row by an extra decrease. Don't worry if your stitch count does not match the number of stitches shown in the chart for rows with the kfb stitch.

