

# SWATCH BAUBLES

A BUNNYMUFF KNIT PATTERN - MONA ZILLAH

bunnymuff - mona8pi@gmail.com



## yarn:

2 Ply Jumper Weight by, Jamieson & Smith Fingering; 100% Shetland; 125yds (115m)/25g

## approximate yarn amounts:

small amounts of a variety of colours

1 or 2 grams of each colour (5 or 6 yds/m)

## needles:

2.25mm (us no 1) DPNs 4in/10cm, set of 5

## gauge:

This is not particularly important, however you want to keep gauge even throughout - either by working with similar weights (or combination to achieve similar weights) or through tension adjustments whilst you knit.

If you work 2 colours more tightly (or loosely) than single-colour knitting, you may need to hold your yarn more loosely (or tightly) as you work.

## approximate finished size:

2.5in/6.5cm diameter ball (laying flat before being stuffed) with suggested yarn and needles

## additional tools:

needle to weave in ends, stuffing, crochet hook for making chained hanger (optional)

The individual and flow of colours that the beauty of a Fair-Isle may bring, compelled me to share this, most gorgeously described: (his writings just rock my clock!)

The phrase and the day and the scene harmonized in a chord. Words. Was it their colours? He allowed them to glow and fade, hue after hue: sunrise gold, the russet and green of apple orchards, azure of waves, the greyfringed fleece of clouds. No it was not their colours: it was the poise and balance of the period itself. Did he then love the rhythmic rise and fall of words better than their associations of legend and colour? Or was it that, being as weak of sight as he was shy of mind, he drew less pleasure from the reflection of the glowing sensible world through the prism of a language manycoloured and richly storied than from the contemplation of an inner world of individual emotions mirrored perfectly in a lucid supple periodic prose?

- James Joyce, *A Portrait of the Artist as a Young Man*

## Abbreviations

**CO** - Use long-tail cast on unless otherwise noted.

**k2tog** - Knit two stitches together.

**k** - Knit.

**m1** - Make one stitch knitwise. To do this you will lift the bar between two stitches, twisting the bar as you work, and knit or knit through the back loop of the bar. Knit will make a right leaning m1 and knit through the back loop will make a left leaning m1. You may use one or the other or both, just keep them consistent throughout your work.



This is a pattern for a knitted bauble to explore colour combinations with yarn. Swatch Baubles are worked in the round, from the bottom up, and with a set of 5 DPNs.

If you would like to share your findings and your Swatch Baubles, visit our bunnymuff group on Ravelry and #swatchbaubles on your favourite me-media sites!

Page 3 has a General Chart as a guideline with a grey-scale gradient of 5 colours. Page 4 has a Chart with the motif and you may print as many as you like to fill in and begin your colouring journey.

Perhaps you will be inspired by fields and moors or cities and interiors. Or maybe you will just grab some yarn and colour as you go!

## jogless stripe

When beginning a new stripe, knit one round in the new colour, before the next round, use the right needle to lift the stitch below the first stitch on the left needle up and on to the left needle. Knit these two stitches together.

Since this is such a small project, slipping the first st of the round may be an easier way to keep the jogs at a minimum, over some rounds.

## BEGIN

Find a nice selection of 5 (or so) colours and label them as A, B, C, D & E. In the general Chart (page 3) you will see the colours as a grey-scale. If you take a couple of black and white images of your yarn selections, this may help you select your 'colour letter'.

You may, of course mix and match and experiment- this is what a Swatch Bauble is all about!

With colour C and leaving a 3in/7.5cm (or so) long tail, CO12 sts onto one DPN. With 3 other DPNS, slip 3 sts to each needle and join to work in the round, being careful not to twist. (4 needles with 3 sts each) Continue with written or move to Chart.

**Round 1:** Using colour C, knit. (12 sts)

**Round 2:** Using colour C, \*k3, m1; repeat from \* 3 more times. (16 sts)

**Round 3:** Using colour C, knit.

**Round 4:** Using colour E, \*(k2, m1) x 2; repeat from \* 3 more times. (24 sts)

**Round 5:** Using colour E, knit.

**Round 6:** Using colour B, \*(k3, m1) x 2; repeat from \* 3 more times. (32 sts)

**Round 7:** Work knit as follows; \*(1 colour B, 1 colour D) x 4; repeat from \* 3 more times.

**Round 8:** Using colour A, (k4, m1) x 2; repeat from \* 3 more times. (40 sts)

**Round 9:** Using colour A, knit.

**Round 10:** \*(K5 with colour C, m1 with colour D) x 2; repeat from \* 3 more times. (48 sts)

**Round 11:** Work knit as follows; \*2 colour C, 1 colour A, 5 colour C, 1 colour A, 3 colour C; repeat from \* 3 more times.

**Round 12:** Work knit as follows; \*(1 colour C, 1 colour A) x 2, 3 colour C, 1 colour A, 1 colour C, 1 colour A, 2 colour C; repeat from \* 3 more times.

**Round 13:** Work knit as follows; \*1 colour A, 3 colour D, 1 colour A, 1 colour D, 1 colour A, 3 colour D, 1 colour A, 1 colour D; repeat from \* 3 more times.

**Round 14:** Work knit as follows; \*(2 colour E, 1 colour A) x 4; repeat from \* 3 more times.

I find when working smaller projects with multiple colours, keeping my tails to the front of the work makes weaving in the ends easier.

If you have a technique or like to work in the ends as you knit your project go ahead and do that!

**Round 15:** Work knit as follows; \*(1 colour A, 3 colour D, 1 colour A, 1 colour D) x 2; repeat from \* 3 more times.

**Round 16:** Work knit as follows; repeat round 12.

**Round 17:** Work knit as follows; repeat round 11.

**Round 18:** Work knit as follows; \*(5 colour C, 1 colour D) x 2; repeat from \* 3 more times.

**Round 19:** Using colour A, \*(k4, k2tog) x 2; repeat from \* 3 more times. (40 sts)

**Round 20:** Using colour A, knit.

**Round 21:** \*(K1 with colour B, k1 with colour D, k1 with colour B, k2tog with colour D) x 2; repeat from \* 3 more times. (32 sts)

**Round 22:** Using colour B, knit.

**Round 23:** Using colour E, \*(k2, k2tog) x 2; repeat from \* 3 more times. (24 sts)

**Round 24:** Using colour E, knit.

**Round 25:** Using colour C, \*(k1, k2tog) x 2; repeat from \* 3 more times. (16 sts)

**Round 26:** Using colour C, knit.

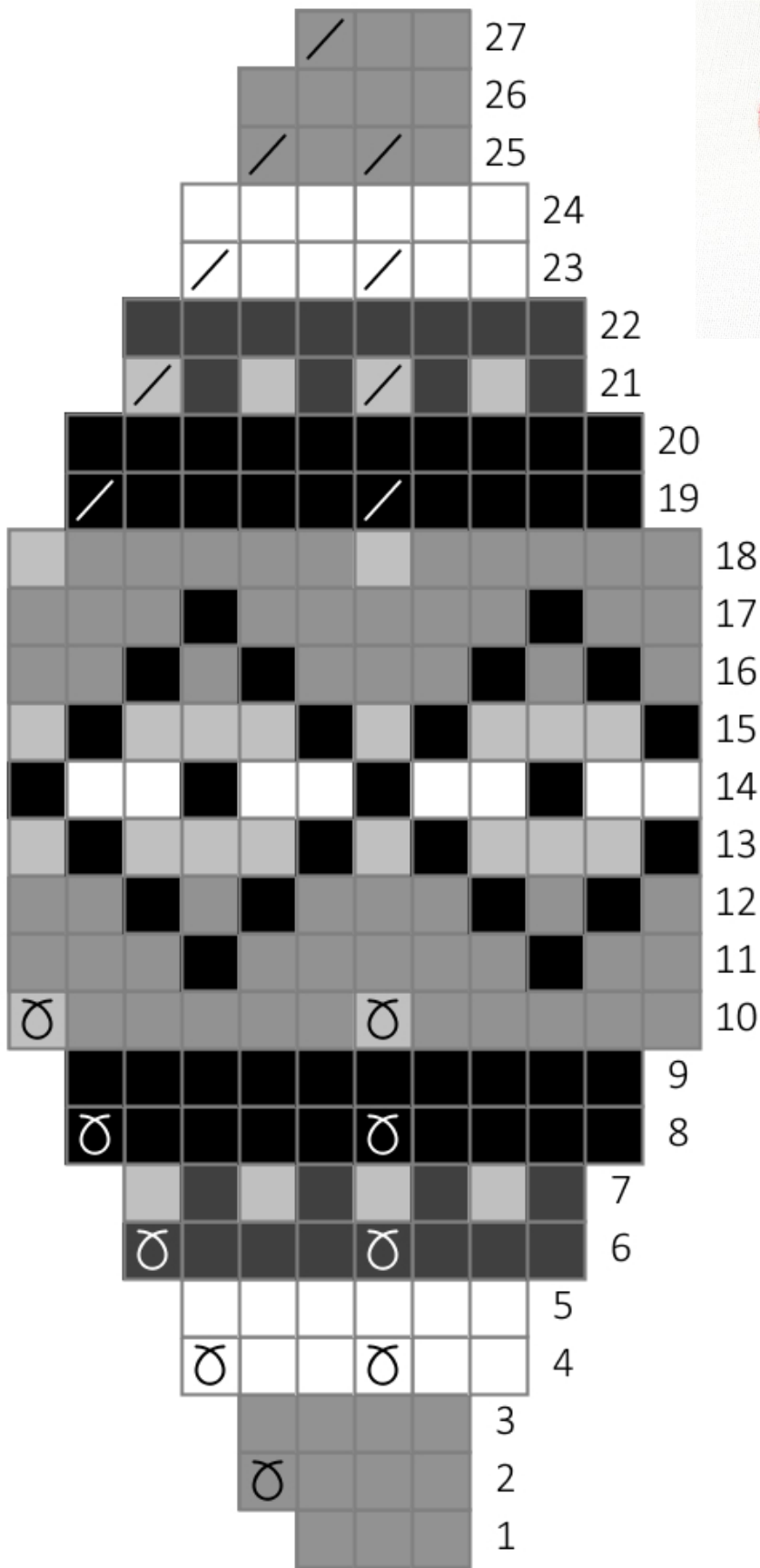
**Round 27:** Using colour C, \*k2, k2tog; repeat from \* 3 more times. (12 sts)

Once you have finished your written or charted instructions, break a long-tail (you may use as a hanger later or crochet a chain and sew to top as a hanger). Pull through the remaining 12 sts, but do not pull tight.

Weave in your yarn ends and use your cast-on tail to sew up the hole at the bottom of your Swatch Bauble.

## FINISHING

You may steam block your bauble between a damp cloth before stuffing firmly into a spherical shape. Pull your top thread tightly to close and weave in the end or loop to make a hanger. Or crochet a chain 3in/7cm in length and attach as hanger.



- Key
-  knit
  -  m1
  -  k2tog
  -  colour A
  -  colour B
  -  colour C
  -  colour D
  -  colour E

